

Mounting subplates type **BA**

single, for ISO valves size 06 to 32

BA-* are single subplates with ISO mounting surface for installation of Atos valves and they are provided with threaded ports for connection to pressure, tank and users lines. They are characterized by low pressure drops and they are specific for directional, flow and pressure control valves ISO size 06, 10, 16, 20, 25 and 32;

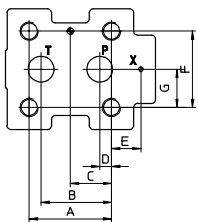
Special subplates or manifolds for customized applications are available upon request.

The set of screws for the valve installation on the BA subplate must be ordered separately, see the code SET SC-* specified in the following sections.

1 TECHNICAL CHARACTERISTICS

Installation position	Any position
Operating pressure	Ports P, T, A, B = 350 bar see the technical table of the valves to be assembled
Ambient temperature	From -20°C to +70°C
Fluid	Hydraulic oil as per DIN 51524...535, for other fluids contact our technical office
Recommended viscosity	15 ÷ 100 mm ² /s - max allowed range: see the technical table of the valves to be assembled
Fluid contamination class	See the technical table of the valves to be assembled
Fluid temperature	See the technical table of the valves to be assembled

**Mounting surface
ISO 6264: 1998**



Matching valves Set of screw
to be ordered separately

AGAM-10	SET SC-AGA-10
AGMZO-10	SET SC-AGA-10
AGAM-20	SET SC-AGA-20
AGMZO-20	SET SC-AGA-20
AGAM-32	SET SC-AGA-32
AGMZO-32	SET SC-AGA-32

size	A	B	C	D	E	F	G
10	53,8	47,5	22,1	22,1	-	53,8	26,9
20	66,7	55,6	33,4	11,1	23,8	70	35
32	88,9	76,2	44,5	12,7	31,8	82,6	41,3

**BA-306
Mounting surface
ISO 6264-06-09-0-97**

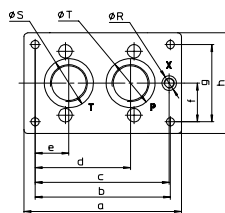
matching valves:
AGAM-10
AGMZO--10

**BA-506
Mounting surface
ISO 6264-08-13-0-97**

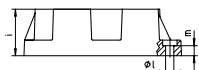
matching valves:
AGAM-20
AGMZO--20

**BA-706
Mounting surface
ISO 6264-10-17-0-97**

matching valves:
AGAM-32
AGMZO--32



**BA-306
BA-506
BA-706**



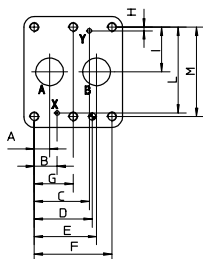
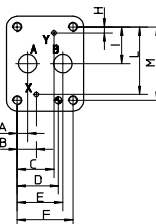
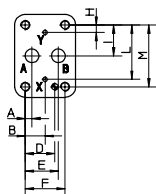
Code	a	b	c	d	e	f	g	h	i	l	m	Ø Blade		
												S	R	T
BA - 306	130	104	97	64,5	19,5	27	54	80	40	8,4	15	36,5	21,5	30
BA - 506	180	150	133,25	92,25	37,25	37,5	75	105	50	10,5	13	46	21,5	46
BA - 706	204	175	173,5	123,5	43,5	50	100	130,5	60	10,5	13	63,5	21,5	63,5

VERSIONS

BA-306, BA-506, BA-706: basic version, see figure on left and dimensional tables.

Code	size	Ports (GAS)			Mass [Kg]
		P	T	X	
BA - 306	10	1/2"	3/4"	1/4"	1,5
BA - 506	20	1"	1"	1/4"	3,5
BA - 706	32	1 1/2"	1 1/2"	1/4"	6

**Mounting surface
ISO 5781: 2000**



Matching valves Set of screw
to be ordered separately

AGI*-10(20)	SET SC-AGI
AGRL(E)-10(20)	SET SC-AGI
AGRCZO-10(20)	SET SC-AGI
AGI*-32	SET SC-AGI-32
AGRL(E)-32	SET SC-AGRL-32

**Mounting surface
ISO 5781-06-07-0-00**

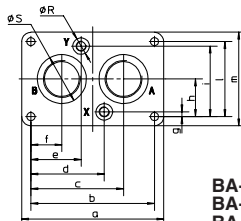
matching valves:
AGI*-10
AGRL-10
AGRLE-10
AGRZO--10

**Mounting surface
ISO 5781-08-10-0-00**

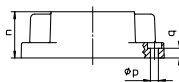
matching valves:
AGI*-20
AGRL-20
AGRLE-20
AGRZO--20

**Mounting surface
ISO 5781-10-13-0-00**

matching valves:
AGI*-32
AGRL-32
AGRLE-32



**BA-305
BA-505
BA-705**



VERSIONS

BA-305, BA-506 and BA-705: see figure on left and dimensional tables.

Code	a	b	c	d	e	f	g	h	i	l	m	n	p	q	Ø Blade	
															S	R
BA - 305	113	90	67	45	45	23	8	33,3	58,7	66,7	90	30	10,5	10	30	21,5
BA - 505	133	110	82,5	64,5	45,5	27,5	6,4	39,7	73	79,4	102,5	42	10,5	10	46	21,5
BA - 705	184	160	120	95	65	40	6	48,5	91	97	121	60	10,5	13	63,5	21,5

Code	size	Ports (GAS)			Mass [Kg]
		A	B	X-Y	
BA - 305	10	1/2"	1/2"	1/4"	1
BA - 505	20	1"	1"	1/4"	2
BA - 705	32	1 1/2"	1 1/2"	1/4"	7,5